



PATHWAYS MEMORY SUPPORT NEIGHBORHOOD

Information, Floor Plans, and Pricing



BROWNING
MASONIC COMMUNITY





BROWNING

MASONIC COMMUNITY

TABLE OF CONTENTS

Who We Are and What We Do	3
Pathways Neighborhood Map.....	5
Sample Floor Plan.....	7
Connecting Realities.....	8
Getting to Know Each Other.....	10
On-site Providers	12
Frequently Asked Questions	13
Steps for your Loved One to Become a Resident	14
Connect With Us	15



WHO WE ARE

Just 3 miles from downtown Waterville, Ohio and even closer to Route 24, Browning Masonic Community is located along the Maumee River. With over 450 scenic acres, you can find spacious scenery outside and a cozy atmosphere inside. We want everyone to feel right at home from the moment they drive onto our campus.

At Browning Masonic Community, part of The Ohio Masonic Communities, a commitment to people and dedication to communities are at the core of everything we do. As a nonprofit with three senior living communities (including Browning Masonic Community), a resource center, and a foundation, the mission of The Ohio Masonic Communities is to empower people to thrive as they age. We embrace innovation, proactively address needs, and bring dreams to life to help people live their best lives. When you call Browning Masonic Community home, we're here every step of the way to help you live your best life and thrive - whatever that looks like for you.

WHAT WE DO

Browning Masonic Community provides independent and assisted living, as well as a memory support neighborhood. With the help of partnerships in the community, and other campuses of The Ohio Masonic Communities, if a resident needs skilled nursing care we can connect them with options for care that's the same high quality we provide across our campus. Our person-centered care adjusts as each person's needs do, so everyone can receive the support they need to live their best life without having to move to a different community.

We believe community is more than just the location, buildings, and services. That's why engagement is part of everything we do - especially for memory support. It makes all the difference in helping our residents thrive. Whether it's life stations, group exercise, games, crafts, baking, or something else, every day is something different. We work to get to know each resident so that we can engage with them in the way that is most meaningful to them.



The Pathways Memory Support Neighborhood at Browning Masonic Community is designed for those with Alzheimer's and other dementias. It offers a homelike atmosphere where residents can maintain as much independence as possible while living in a safe, secure environment. As a type of assisted living, we offer housekeeping and laundry services, in addition to providing meals. With 24/7 nursing staff, we also assist residents with a variety of their activities of daily living based on their needs.

There are 25 private apartments in our Pathways Memory Support Neighborhood, with a dedicated nurse's station, its own kitchen and dining room, a beauty salon, a private courtyard, and more. The neighborhood is designed like a circle, which allows for the secured entrances that are important to our residents' safety, while also offering them access to a courtyard and making sure every apartment has a window.

The neighborhood also features a variety of community spaces that have been purposefully designed, each with its own focus on a specific activity like music, games, or movies.

It wouldn't be complete without the staff who work hard to get to know each resident and tailor the daily routines, activities, and events to each resident's likes and interests. A combination of nursing, dining, housekeeping, and activities staff make our Pathways Memory Support Neighborhood a welcoming environment full of compassionate support.

Activities of Daily Living can Include Assistance with

- Medication administration
- Bathing/showering and grooming
- Mobility and transfers
- Dressing

PATHWAYS NEIGHBORHOOD MAP



- A. Pathways Emergency Exit -Connector Hall
- B. Pathways River Walk - Dining Exit
- C. Pathways River Walk - Activity Room Exit
- D. Pathways Connector Hall - Courtyard Exit
- E. Pathways Farm View - Activity Room Exit
- F. Pathways Farm View - Dining Exit



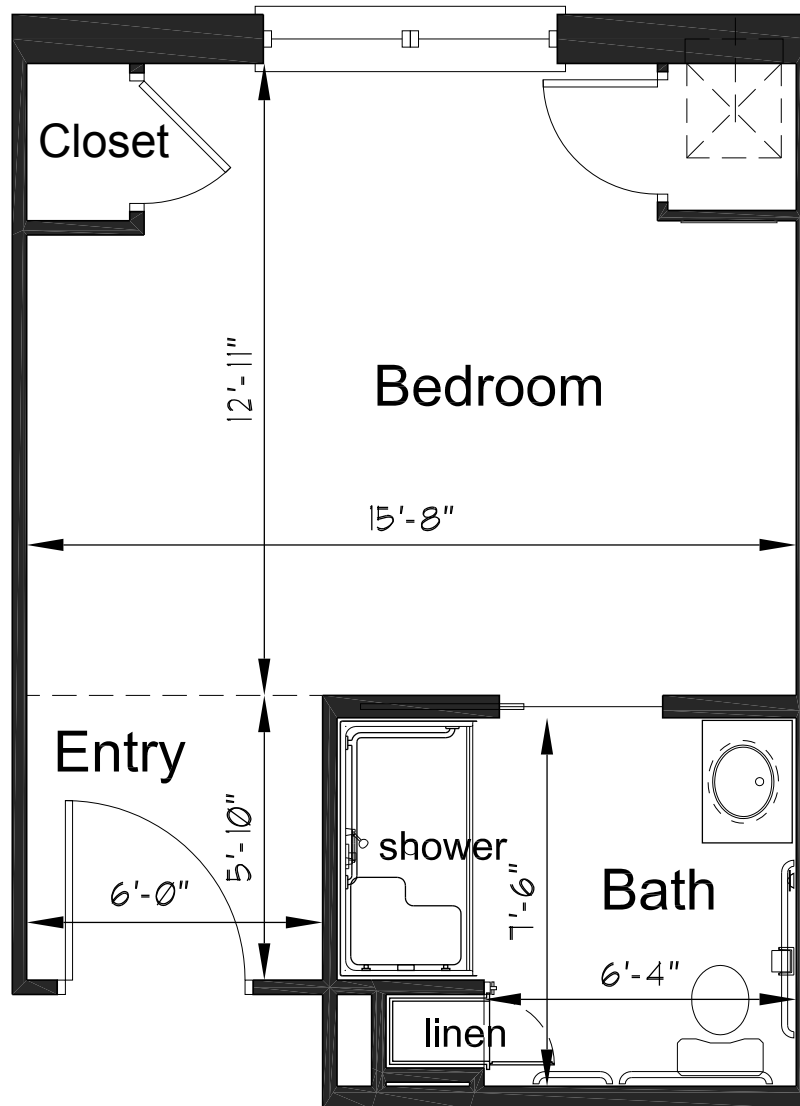
You might see some memory care communities offer their services a la carte, and you're billed for the number of times your loved one needs assistance with each activity of daily living (ADL) in addition to a base rent. We want your loved one to get the care and support they need, without you worrying about hidden costs or fees at the end of the month. That's why our monthly prices are all inclusive, so you know exactly what to expect.

In the Pathways Memory Support Neighborhood, you can expect your loved one to have a private apartment with their own bathroom and a window. The bathroom in each apartment is complete with heated tile floors, and a walk-in shower with a seat. If they need help in the bathroom, either with toileting or bathing, our especially trained staff are there to help. Every apartment is equipped with its own heating and air controls and emergency call system.

The monthly fee for each resident also includes all utilities, cable TV and phone services, optional laundry, and housekeeping. Our chef even prepares three meals a day that are served in the neighborhood's own dining room.



SAMPLE FLOOR PLAN



Your Apartment Includes:

- Private living accommodations
- Private, fully equipped bathrooms with walk-in showers with seat
- Individually controlled heating and air conditioning
- Emergency call response system

Monthly Fee
\$5,995

Additional Occupant
\$2,470/month

If a short-term stay could be beneficial for you or your loved one, ask us for more information about our respite care options.

Prices effective January 1, 2024. All rates are subject to change.



BROWNING
MASONIC COMMUNITY

Connecting Realities



part research
part relationship

Connecting Realities, the programming that makes our neighborhood what it is, is all about meeting residents where they're at – in their reality. We work hard to get to know each resident so that we can connect who they were with who they are. The best way to understand what Connecting Realities is, and how it improves the quality of life of our residents, is to look at the three elements at its core – training, engagement, and design.

1 TRAINING



Making sure your loved one receives the best care starts with making sure the staff know the best ways to care for and engage with them. We use a variety of training methods to train our teams, including online and hands-on. We require them to participate in a dementia workshop and routine skills checks. We also offer training for our caregivers to become Certified Dementia Practitioners (CDP).

The most impactful training we require our team to complete is Embodied Labs™. It's an innovative virtual reality (VR) training experience that allows

participants to experience some of the challenges associated with dementia firsthand. Embodied Labs™ is impactful beyond just our team of caregivers, which is why we also periodically offer this training to families and community members.

2 ENGAGEMENT



Beyond their apartments and the staff providing care, engaging with residents is at the core of memory support. As part of Connecting Realities, our neighborhood has a range of technologies focused on ways your loved one can enjoy themselves and thrive. Our Lucynt Table is known as a “dementia magic table,” where a system of sensors and a projector create an interactive game table with a variety of games and activities. There’s also Cara’s Kennel, which is a collection of robotic dogs, cats, and birds that residents with dementia can adopt as a furry (or feathered) companion. One of the most popular with the residents

is iN2L. It’s a computer-based system where residents, using their own profile, can watch their favorite black and white movies, listen to their favorite songs from when they were young, or even use a simulator to drive through the countryside. When you walk around our neighborhood, you may see areas like a gardening station, woodworking shop, home office, or library. Known as “life stations”, these spaces are set up throughout the neighborhood and give residents the opportunity to engage in some of their favorite activities safely and independently.



Music is a great tool to engage with residents, even if they don’t communicate verbally, and aligns with our goal of meeting every resident in their reality. Our certified music therapist has 1:1 therapy sessions with residents and also works with small groups of residents doing music activities like drum circles.

3 DESIGN

We think this goes beyond walls or rooms or floors. To us, it’s about creating an environment where residents with dementia can thrive. In 2023 we renovated the entire neighborhood with new flooring, paint, furniture, and more. Using research as our basis, the Connecting Realities philosophy highlights the importance of using intentional choices in our designs, such as paint colors, lighting levels, and patterns on the floor. The right choices can create the best environment possible for your loved one. Our physical space also features a quiet room for residents experiencing sensory overload and interactive wall art throughout the neighborhood. Our favorite feature is the memory shadow box outside each apartment which not only help us get to know your loved one, but also help them recognize which apartment is theirs.



GETTING TO KNOW YOUR LOVED ONE

Before your loved one moves in, we'll start assessing them and gathering information to help us understand how best to meet them where they are. To start, we'll work with their doctor to get what's known as an H&P or history and physical exam. It gives us the short story of their health history and any current conditions they're being treated for. Using that as a guide, we'll meet with them to conduct our own assessment. We want to understand what activities your loved one will need help with so that we can create a care plan that encompasses their needs.

One of the most important assessment tools we use for our memory support residents is known as the GDS or Global Deterioration Scale. This tool specifically measures cognitive function with someone who has dementia. It gives us a picture of where they are at in their disease process so that we can understand how to best tailor the ways we engage with them to where they are. We also use the GDS to establish a baseline so we can keep an eye on how their memory or cognitive function changes over time.

GETTING TO KNOW YOU AND OTHER FAMILY MEMBERS

Part of understanding your loved one is understanding the people they love. You're the expert on your loved one, so we want to hear from you about the things and people that are important to them. We'll use a combination of formal and informal interviews to ask questions and hear stories about their life. We want to know everything from what kind of soap they like to use to how they like to wear their hair to what they were like as a spouse, parent, or family member. No detail is too small to help us understand how to make the best out of every day with them.

A DAY IN THE LIFE

Each day we try to balance having structure with flexibility that allows for autonomy and independence – both of which can be beneficial for someone with dementia. You'll notice in our outline of a day in the life that some things are scheduled for specific times, and others are scheduled for general times of day. As we learn your loved one's interests and needs, we'll add to this schedule with things like showers, haircuts, and doctors appointments.

A Typical Day at Pathways Memory Support Neighborhood

Wake up and morning routine	Coffee/Tea time	7:30 am Breakfast	Lucynt and mind and body warm-up	Engaged activities like baking and crafts
11:30 am Lunch	2 and 3 pm Activities	5 pm Dinner	Tidy up time, puzzles, reminisce and relaxation time	Night routine and bedtime



It's our integrative approach to providing holistic and personalized care and support.

On-Site Providers and Services



At Browning Masonic Community, we are fortunate to have a variety of services that come in-house to assist in the care of our residents. These services are typically covered through Medicare, supplemental insurance, and may have out-of-pocket co-pays or costs.



Svetlana Stahl, CNP
Primary Care



Dr. Scott Johnston
Podiatry



Lexe Wooten
MSN, APRN, FNP-C
Psychiatry



Pharmacy Service
Provided by





Frequently Asked Questions

What's included in the cost?

Our monthly fee covers the cost of your loved one's apartment, all utilities including phone and cable TV, housekeeping, laundry, meals, and care provided by a nurse or nursing assistant. The other services we offer, such as for hearing aids, glasses, dental care, and foot care are available to residents but are not included in the monthly fee. Those services can frequently be covered by health insurance. The beauty salon is not included in the monthly fee, but we can connect you with our stylist so you can learn more about the services they provide, their costs, and scheduling appointments for your loved one.

Does my loved one have to be Mason-affiliated? Do I have to be Mason-affiliated?

No, our community is open to the public regardless of being Masonic or not. During the application process we'll ask about any Masonic affiliations, but we don't use that information to decide if your loved one is eligible to live here.

Are snacks included?

We love to bake in the Pathways Memory Support Neighborhood, and residents bake snacks for the whole neighborhood every day. If your loved one has a favorite snack that they enjoy eating, or even a favorite drink, we recommend you supply those.

Do you accept Medicare, Medicaid, or other private insurance?

Most of our residents are private pay. If you have questions about Medicare, Medicaid, private insurance, or long-term care insurance, talk to your sales counselor. They can explain our pricing more in-depth and connect you with people and resources to answer your questions.

STEPS FOR YOUR LOVED ONE TO BECOME A RESIDENT

- Loved one receives diagnosis of Alzheimer's or another dementia.
- You or another loved one receives Power of Attorney (POA) to be able to make decisions for your loved one with dementia.
- You and/or other loved ones or caregivers decide it's time for a memory support community and start researching options.
- Call and talk to a sales counselor to get more information about the options at Browning Masonic Community.
- Tour our Pathways Memory Support Neighborhood and ask us any questions you have.
- Submit a free application for financial qualification.
- We review your loved one's personal and financial information to ensure we're a good fit financially.
- Your loved one gets approved!
- One of our nurses completes a clinical assessment to ensure we're a good fit for their care needs.
- Your loved one gets approved and we create a personalized care plan for them.
- Place a deposit for the apartment you choose.
- Sign our agreements and schedule your loved one's move in.
- Move in day!
- Your loved one becomes a resident of our Pathways Memory Support Neighborhood and thrives.

CONNECT WITH US

Senior Living Today 

A Podcast
Produced by



THE OHIO MASONIC
COMMUNITIES

Want to learn more about senior living? Check out our podcast, Senior Living Today! Episodes are released every other week and cover topics ranging from the advantages of a senior living community to brain health to lifestyle benefits.

The podcast is available on YouTube, Spotify, Apple Podcasts, iHeart Radio, Stitcher, Google Podcasts, or visit omcoh.org and click 'Podcast' from the top menu.



facebook.com/browningmasoniccommunity



YouTube

youtube.com/@TheOhioMasonicCommunities



[@browningmasoniccommunity](https://instagram.com/browningmasoniccommunity)



BROWNING
MASONIC COMMUNITY



8883 Browning Drive, Waterville, OH 43566 | bmcoh.org | (419) 878-4055

Today. Tomorrow. Together.