



# BMC - AL - One Bedroom Apartment

552 Square Feet

Tier 1: \$3,815/mo

Tier 2: \$4,415/mo

Tier 3: \$5,015/mo

Tier 4: \$5,615/mo

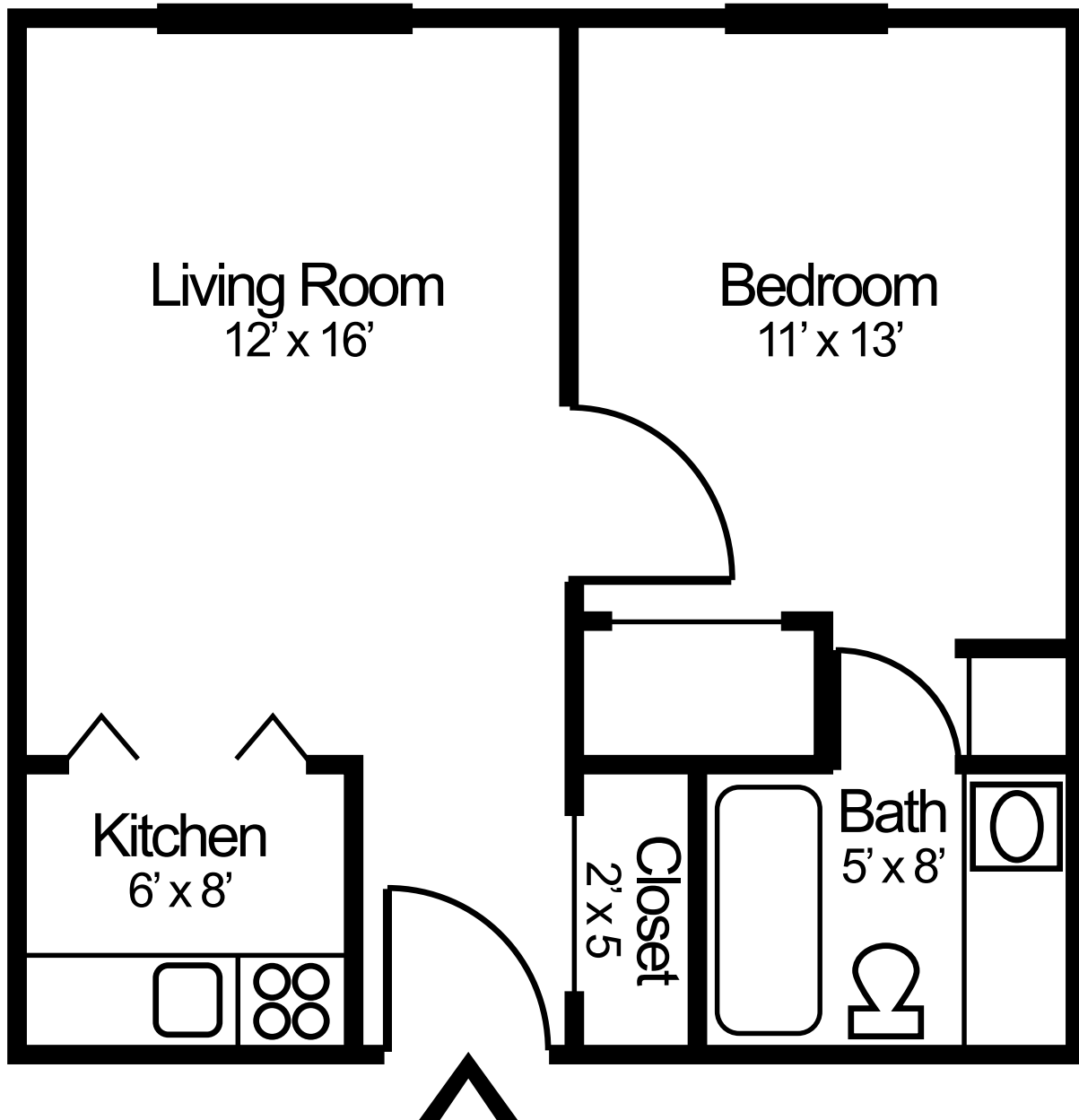
2nd Person Fee:

Tier 1: \$750/mo

Tier 2: \$1,350/mo

Tier 3: \$1,950/mo

Tier 4: \$2,550/mo



Prices effective January 1, 2025. All rates are subject to change.



# OFFERS, FEATURES, **AND** AMENITIES

Our licensed assisted living at Browning Masonic Community is perfect for those who can still live on their own but need help with some of their activities of daily living – like remembering to take medication, getting dressed, and showering or bathing. We take a personalized approach and adjust the amount of support and care we provide to your needs.

## Amenities

- Our residents enjoy a maintenance-free and worry-free lifestyle where they don't have to mow the lawn, shovel snow, or fix problems that can arise when you own a home.
- If you want to exercise on your own or join a group class, we have everything you need in the fitness center in our main building. We also have outdoor exercise equipment available by the lake.
- In our full-service salon, residents can have all their beauty needs taken care of without ever leaving campus.

## Features

- |  |                                 |
|--|---------------------------------|
| • Kitchenette                                    | • 24-hour emergency call system |
| • Private storage                                | • Weekly laundry                |
| • Private bathroom in each apartment             | • Housekeeping                  |
| • Phone, cable, and high-speed internet included | • 3 meals a day                 |

You might see some communities offer their services a la carte, and you're billed for the number of times you or your loved one needs assistance with each activity of daily living (ADL) in addition to a base rent. We want each resident to get the care and support they need, without worrying about hidden costs or fees at the end of the month. That's why our monthly prices are all inclusive, so you know exactly what to expect. We look at how many activities each resident needs assistance with and how frequently they need that assistance to decide what tier of care they need. Each tier has its own price, and residents can move between the tiers as their needs change. If you have questions about the tier pricing, we're here to help.