



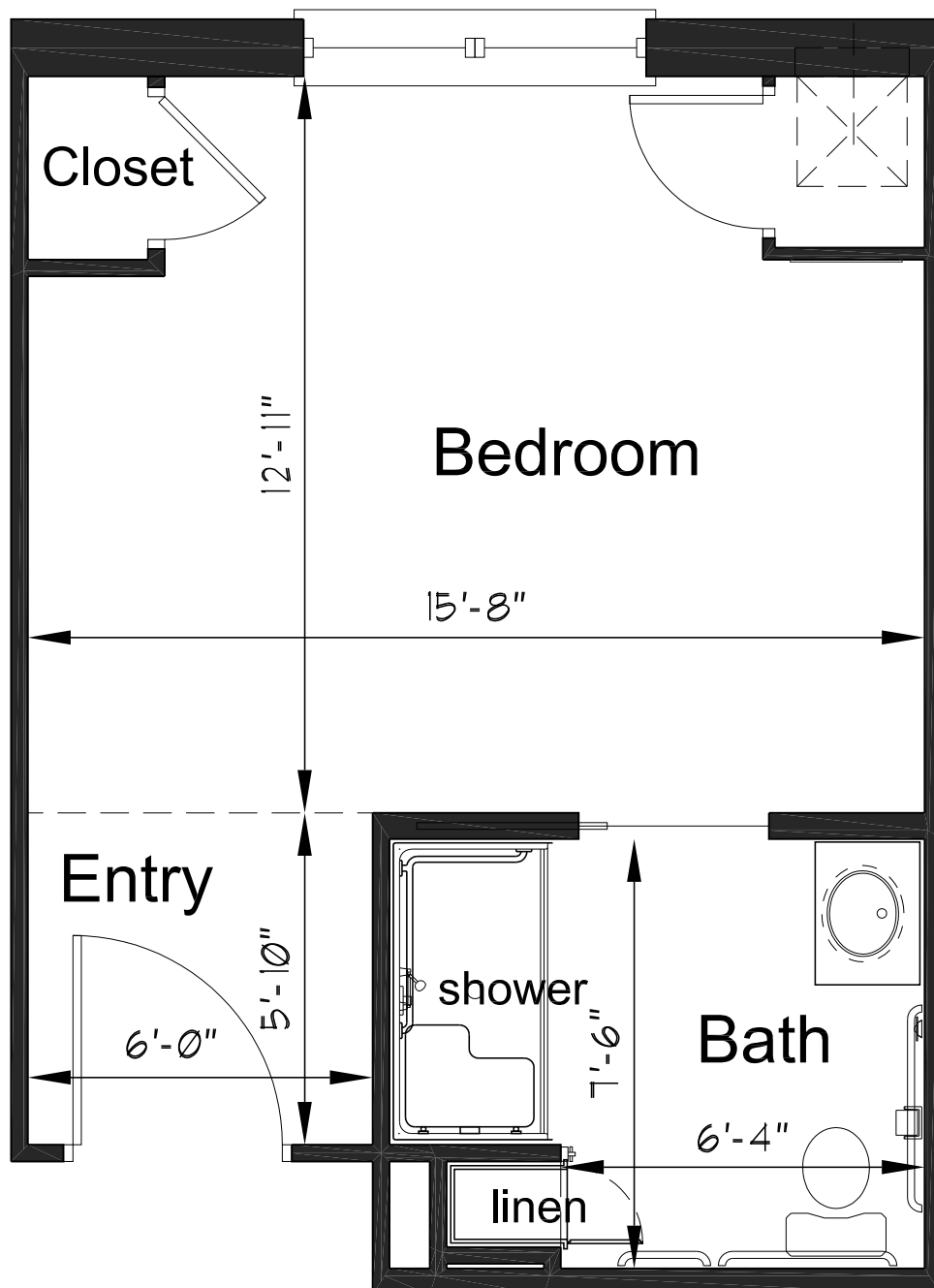
BMC - Pathways

Approx. 400 sq. ft. | Dimensions may vary

\$6,235/month

Additional Occupant : \$2550/month

Private living accommodations | Private, fully equipped bathrooms with walk-in showers with seat
Individually controlled heating and air conditioning | Emergency call response system



Prices effective January 1, 2025. All rates are subject to change.



The Pathways Memory Support Neighborhood at Browning Masonic Community is designed for those with Alzheimer's and other dementias. It offers a homelike atmosphere where residents can maintain as much independence as possible while living in a safe, secure environment. As a type of assisted living, we offer housekeeping and laundry services, in addition to providing meals. With 24/7 nursing staff, we also assist residents with a variety of their activities of daily living based on their needs.

There are 25 private apartments in our Pathways Memory Support Neighborhood, with a dedicated nurse's station, its own kitchen and dining room, a beauty salon, a private courtyard, and more. The neighborhood is designed like a circle, which allows for the secured entrances that are important to our residents' safety, while also offering them access to a courtyard and making sure every apartment has a window. The neighborhood also features a variety of community spaces that have been purposefully designed, each with its own focus on a specific activity like music, games, or movies.

It wouldn't be complete without the staff who work hard to get to know each resident and tailor the daily routines, activities, and events to each resident's likes and interests. A combination of nursing, dining, housekeeping, and activities staff make our Pathways Memory Support Neighborhood a welcoming environment full of compassionate support.

Activities of Daily Living can Include Assistance with

- Medication administration
- Bathing/showering and grooming
- Mobility and transfers
- Dressing